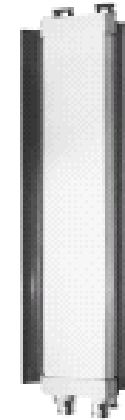


DECT Antennen 1.9 GHz



| Typ: | SPA1900/70/8/0/CP | SPA1900/85/8/0/DS | SPA1900/65/15/0/DS | SPA1900/85/8/0/DS |
|----------------------|--------------------------|--------------------------|---------------------------|--------------------------|
| Polarisation: | Circular | Dual-Slant | Dual-Slant | Dual-Slant |
| Gain in dBi: | 8 | 8 | 15 | 8 |
| Beamwith Horizontal: | 70° | 85° | 65° | 85° |
| Beamwith Vertical: | 70° | 75° | 18° | 75° |
| Downtilt: | 0° | 0° | 0° | 0° |
| Dimensions in mm: | 101x95x32 | 101x95x32 | 542x172x39 | 101x95x32 |
| Weight in kg: | 0,1 | 0,1 | 1,8 | 0,1 |
| Connector: | TNC female | SMA female | N female | TNC female |
| Temperature: | -40°C to +80°C | -40°C to +80°C | -40°C to +80°C | -40°C to +80°C |
| Ordernr.: | HUS00034 | HUS00036 | HUS00005 | HUS00037 |

Mounting Accessories / Halterungen



Type: Downtilt for:
SPA1900/65/15/0/DS

Ordernr.: HUS00016



Sidetilt for:
SPA1900/65/15/0/DS

HUS00021



Mast mounting for:
SPA1900/85/8/0/DS
SPA1900/85/8/9/V
SPA1900/85/8/0/CP

HUS00024



Sidetilt for:
SPA1900/85/8/0/DS
SPA1900/85/8/0/V
SPA1900/85/8/0/CP

HUS00023

Kabel für die DECT - Antennen



Type:

RG223 / 1m / N-male / TNC-male, Ordernr.: HUS00055
RG223 / 2m / N-male / TNC-male, Ordernr.: HUS00056
RG223 / 3m / N-male / TNC-male, Ordernr.: HUS00057
RG223 / 5m / N-male / TNC-male, Ordernr.: HUS00058

Hinweis:

Die Dämpfung beträgt bei 1900 MHz: 0,6dB/meter

Application „medium coverage“



Antenna SPA1900/85/8/0/DS

**Cable example:
RG223 / 2m / TNC-male / TNC-male
Ordernr.: HUS00051**

2 x Antenna SPA1900/70/8/0/CP



Application „High coverage“

Diversity Antenna „>2200m“ (outdoor)

Antenna SPA 1900/65/15/0/DS

Cable example:

2 x RG223 / 3m/ TNC-male / N-male

